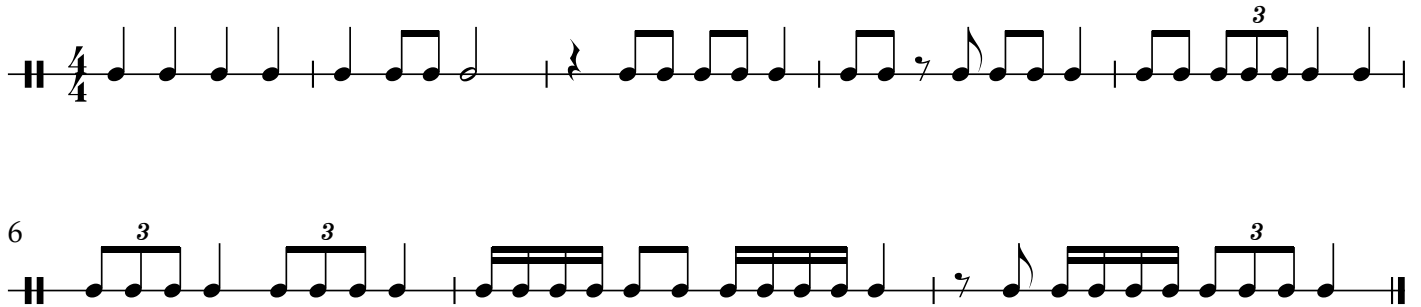


## Percussion

**Major Scales:** B $\flat$  Concert, E $\flat$  Concert & F Concert, ascending & descending, on the mallet instrument of your choosing

**Rhythm:** Please Clap the following progressive rhythm at  $\text{♩} = 90$



## Prepared Melody

Please prepare 16 bars of piece of your choosing. Choose something that you think you are good at and that you enjoy

**Assigned Melody:** Please Play the Assigned Snare Drum Part and Mallet Part if you play mallets.



This image displays four staves of musical notation in B-flat major (two flats). The notation includes various melodic lines with dynamic markings of *f* (forte) and *p* (piano). The first staff begins with a *f* marking. The second staff begins with a *p* marking. The third staff contains both *f* and *p* markings. The fourth staff begins with a *f* marking. The music consists of eighth and sixteenth notes, often beamed together, and includes slurs and a final double bar line.

*f*

*p*

*f* *p*

*f*